

# Rowe Referrals

The Veterinary Hospital

Bradley House, Ferndene

Bristol, BS32 9DT

Telephone 01454 521000

Fax 01454 521001

referrals@rowevetgroup.com

www.rowereferrals.co.uk

## *The Eye Clinic*

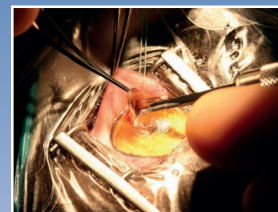
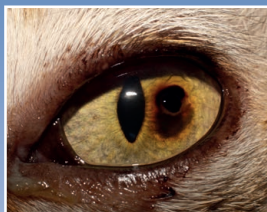
eyeclinic@rowevetgroup.com

eyes@rowevetgroup.com

# Rowe

Referrals

## Corneal Sequestrum



[www.facebook.com/roweeyeclinic](http://www.facebook.com/roweeyeclinic)

[www.facebook.com/roweveterinaryreferrals](http://www.facebook.com/roweveterinaryreferrals)



# Corneal Sequestrum

## ***What is a corneal sequestrum?***

A corneal sequestrum is a disease of the surface of the eye (cornea). It is commonly seen in cats, and only rarely seen in dogs. The sequestrum is an accumulation of dead corneal tissue, which acts as a foreign body and causes significant discomfort.



## ***Why does it occur?***

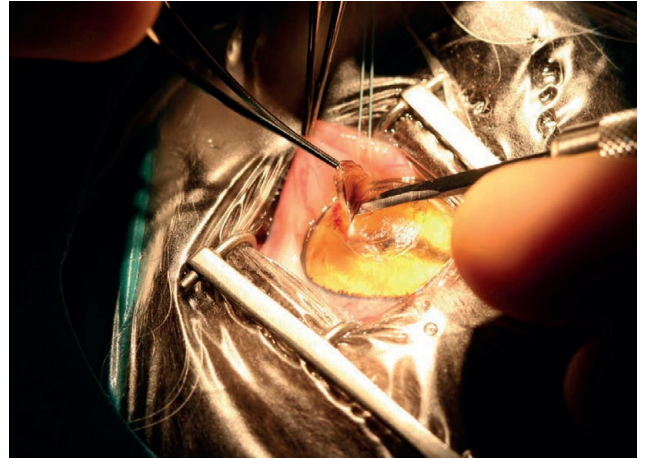
The reason a corneal sequestrum forms is unclear, however several underlying contributing factors have been associated with its development. These factors include infectious diseases, chronic irritation due to misdirected hair or foreign bodies and dry eye disease just to mention a few.

## ***Are any breeds predisposed?***

Although all breeds can be affected, Persians, Himalayans, and British Short Hair cats seem to be predisposed.

## ***What treatment options do I have?***

Corneal sequestration is generally considered a surgical condition. Whereas supportive medical treatment and correction of the underlying cause are important, few cases make a full recovery without surgery. Several surgical techniques are available and tailored specifically to your cat's needs, depending on the stage of disease and other contributing factors.



## ***What happens if I do nothing?***

Corneal sequestration tends to progress, causing deep corneal ulceration, which may result in the loss of vision or the eye if left untreated, not to mention the severe ocular discomfort it causes.

***If you have any further questions regarding this or any other condition feel free to contact us.***